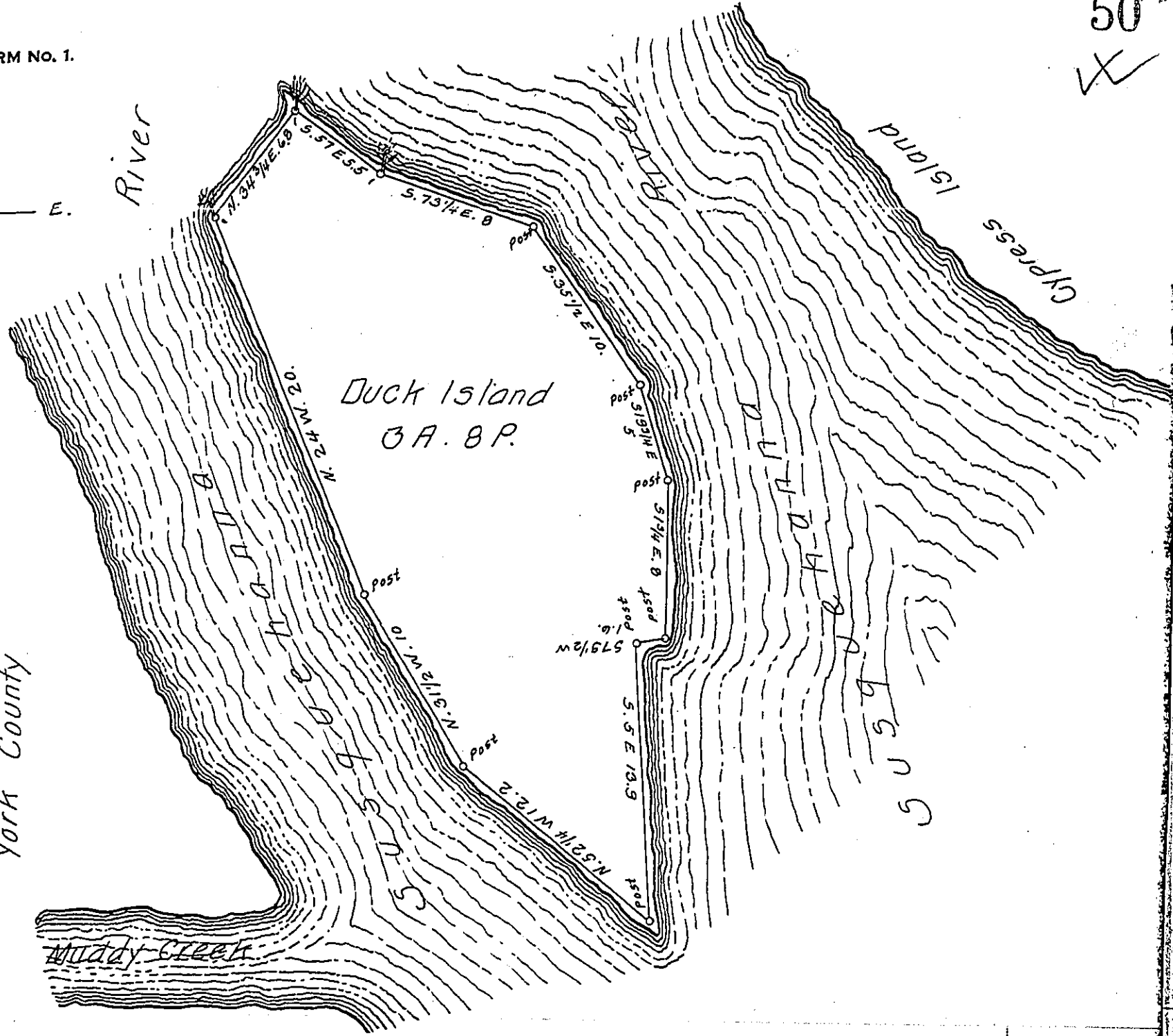


River
York County



In pursuance of a warrant granted to Felix Shoff dated November 26th 1890. Surveyed December 5th 1890. the above described tract of land known as "Duck Island" containing Three Acres and eight perches. Lying adjacent to Cypress Island, and nearly opposite Muddy Creek. in Drumore Township. Lancaster County Penna.

To Hon. Thos. J. Stewart
Secretary of Internal Affairs

Frank M. Trout
County Surveyor
Lancaster Co. Pa.

IN TESTIMONY that the above is a copy of the original remaining on file in the Department of Internal Affairs of Pennsylvania, made conformably to an Act of Assembly approved the 16th day of February 1833, I have hereunto set my hand and caused the Seal of said Department to be affixed at Harrisburg, this twelfth day of March 1907.

Geo. A. Brown
Secretary of Internal Affairs.